

# Past Producing Mines & Sites of Environmental Concern in British Columbia 1852 - 2007

## MineType

- ✕ Coal Mine
- ✕ Industrial Mineral
- ✕ Metal Mine

## Priority & Candidate Risk Sites

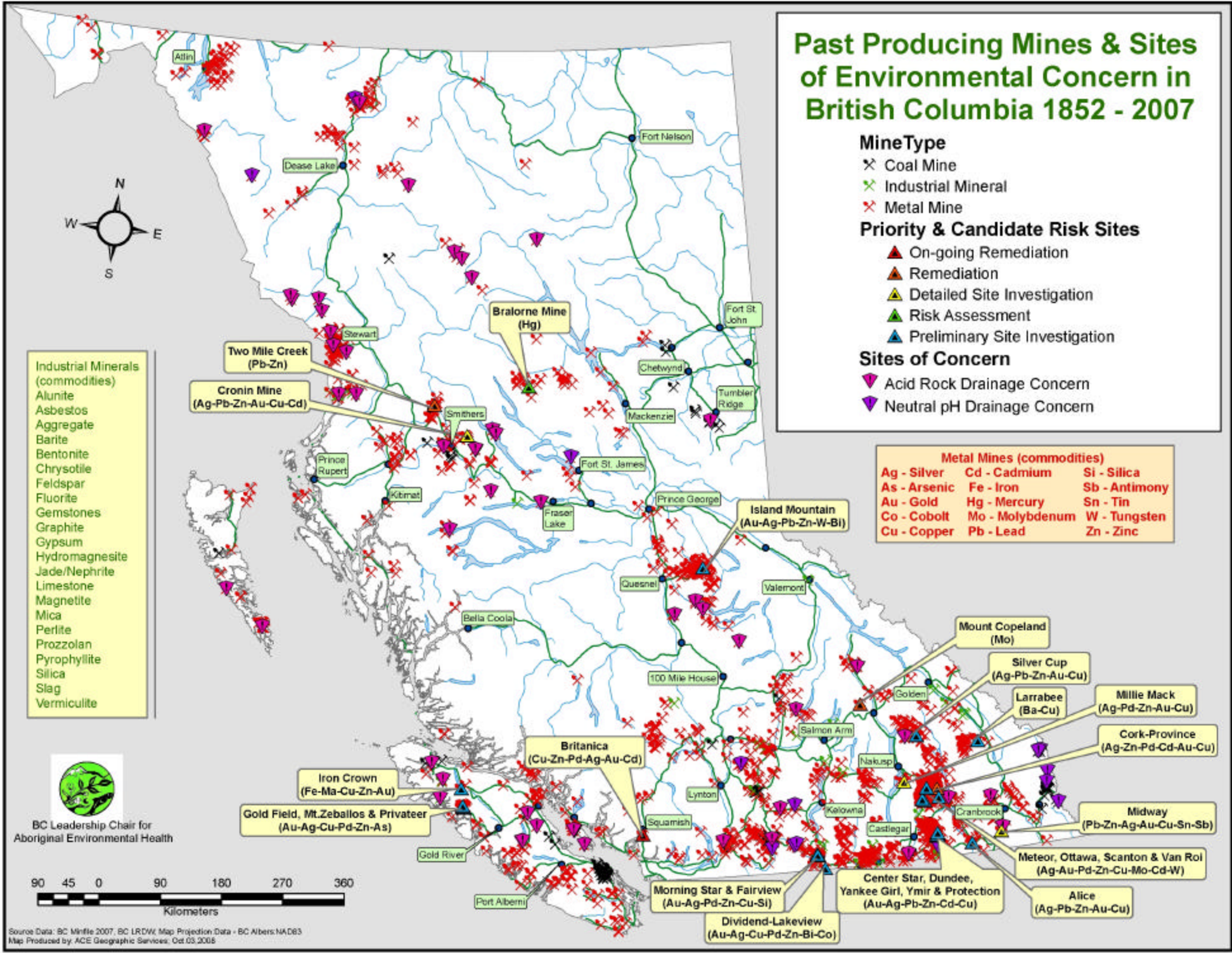
- ▲ On-going Remediation
- ▲ Remediation
- ▲ Detailed Site Investigation
- ▲ Risk Assessment
- ▲ Preliminary Site Investigation

## Sites of Concern

- ▼ Acid Rock Drainage Concern
- ▼ Neutral pH Drainage Concern

- Industrial Minerals (commodities)**
- Alunite
  - Asbestos
  - Aggregate
  - Barite
  - Bentonite
  - Chrysotile
  - Feldspar
  - Fluorite
  - Gemstones
  - Graphite
  - Gypsum
  - Hydromagnesite
  - Jade/Nephrite
  - Limestone
  - Magnetite
  - Mica
  - Perlite
  - Prozozolan
  - Pyrophyllite
  - Silica
  - Slag
  - Vermiculite

- Metal Mines (commodities)**
- |              |                 |               |
|--------------|-----------------|---------------|
| Ag - Silver  | Cd - Cadmium    | Si - Silica   |
| As - Arsenic | Fe - Iron       | Sb - Antimony |
| Au - Gold    | Hg - Mercury    | Sn - Tin      |
| Co - Cobalt  | Mo - Molybdenum | W - Tungsten  |
| Cu - Copper  | Pb - Lead       | Zn - Zinc     |



Source Data: BC Minfile 2007, BC LRDW, Map Projection Data - BC Abers NAD83  
Map Produced by ACE Geographic Services, Oct 03, 2008

BC Leadership Chair for  
Aboriginal Environmental Health